

Printing to the FACET e-Log

Joel Frederico*
Stanford University
(Dated: July 19, 2010)

While not clear from the help in the FACET e-log, it is possible to print directly to the log. This may save time by allowing a user to simply print from their machine instead of logging in and uploading. After printing, the e-log entry will need to be updated with a title, author, etc.

TABLE I. Generic Settings

Address:	physics-e-log.slac.stanford.edu
Queue:	facetlog
Driver:	PostScript driver (of some sort)
Protocol:	Line Printer Daemon (LPD) or Line Printer Remote (LPR)
Connection:	Must be connected to SLAC's internal network (directly or by printing through a tunnel/VPN)

REQUIREMENTS AND DRAWBACKS

In order to connect to the printer, the printing machine must be connected to SLAC's internal network. This is only possible if the machine is connected via ethernet cable at SLAC or if printing is tunneled in, most likely via SSH or a VPN.

The other requirement is PostScript. The e-logs expect a PostScript format from the printing machine. PostScript is beneficial in that it provides a vector-based format that can preserve documents exactly as printed. There are a few drawbacks. Printed files in the e-log are only available in the PostScript format. If a machine cannot open PostScript files, it will not be able to recover the full-quality files. Additionally, when an e-log accepts a PostScript file, it converts it to the jpeg format for preliminary viewing online. The quality of the PostScript printer and size of the document can have an effect on the quality of the jpeg. Also, when printing entire sections of the log in one PDF, the jpeg of each attachment is embedded instead of the PostScript. This can have noticeably adverse effects in the printouts, particularly if the PostScript-to-jpeg conversion was poor.

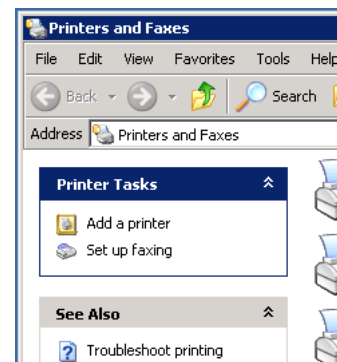
INSTRUCTIONS

Generic Settings

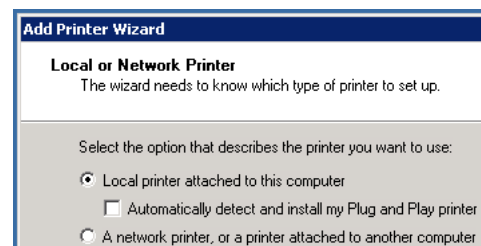
These are the generic settings necessary to print to the FACET e-log. (Table I) Other e-logs may have a different server and/or a different queue. However, the drivers and setup should be very similar across different systems.

Windows

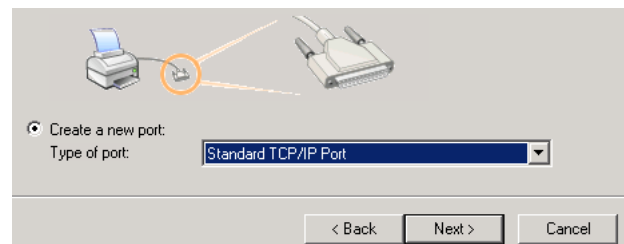
1. Open Printers and Faxes from the Control Panel.
2. Click Add a Printer



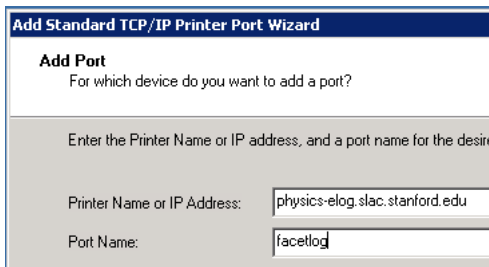
3. Select the local printer option without detecting a Plug-and-Play printer.



4. Choose to create a new port.

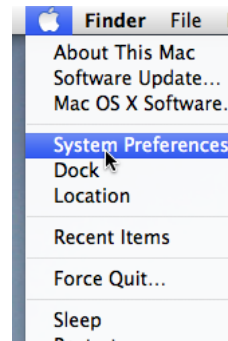


5. Enter the address *physics-e-log.slac.stanford.edu* and port *facetlog*.

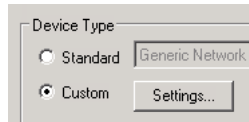


Mac OS X 10.6+

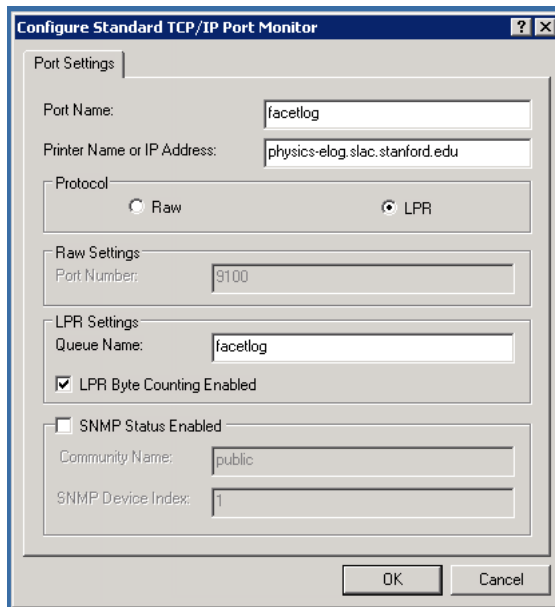
1. Open *System Preferences*



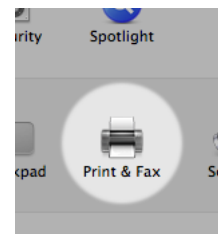
6. For device type, choose *Custom* and click the *Settings...* button.



7. Fill in the following settings: LPR mode, Queue Name: facetlog, LPR Byte Counting Enabled

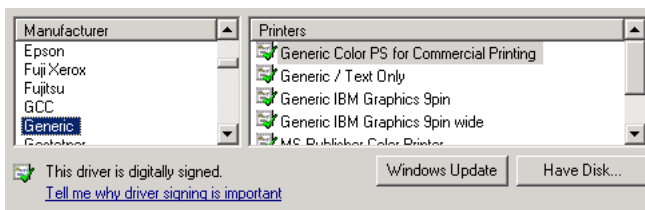


2. Open *Print & Fax*



3. Add a printer by clicking the plus button

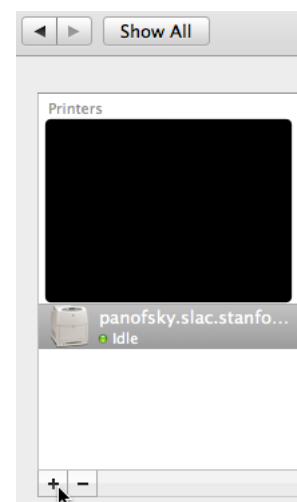
8. Navigate forward until the dialog asks for you to select a printer. Choose *Have Disk*.

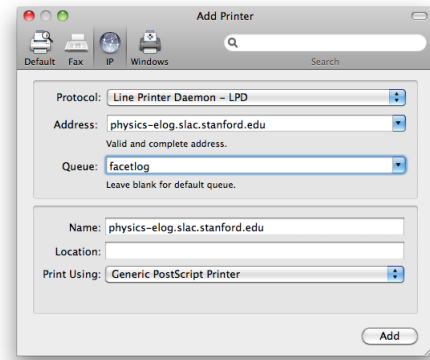


9. Select the file:
C:\Program Files\Microsoft Office\
Office12\MSCOL11.INF
and use the printer driver that file contains.

10. Finish navigating forward, do *not* print a test page.
E-log entries cannot be deleted!

4. Fill in the appropriate settings





5. Leave *Duplex Printing* unchecked and finish adding the printer

* joelfred@slac.stanford.edu