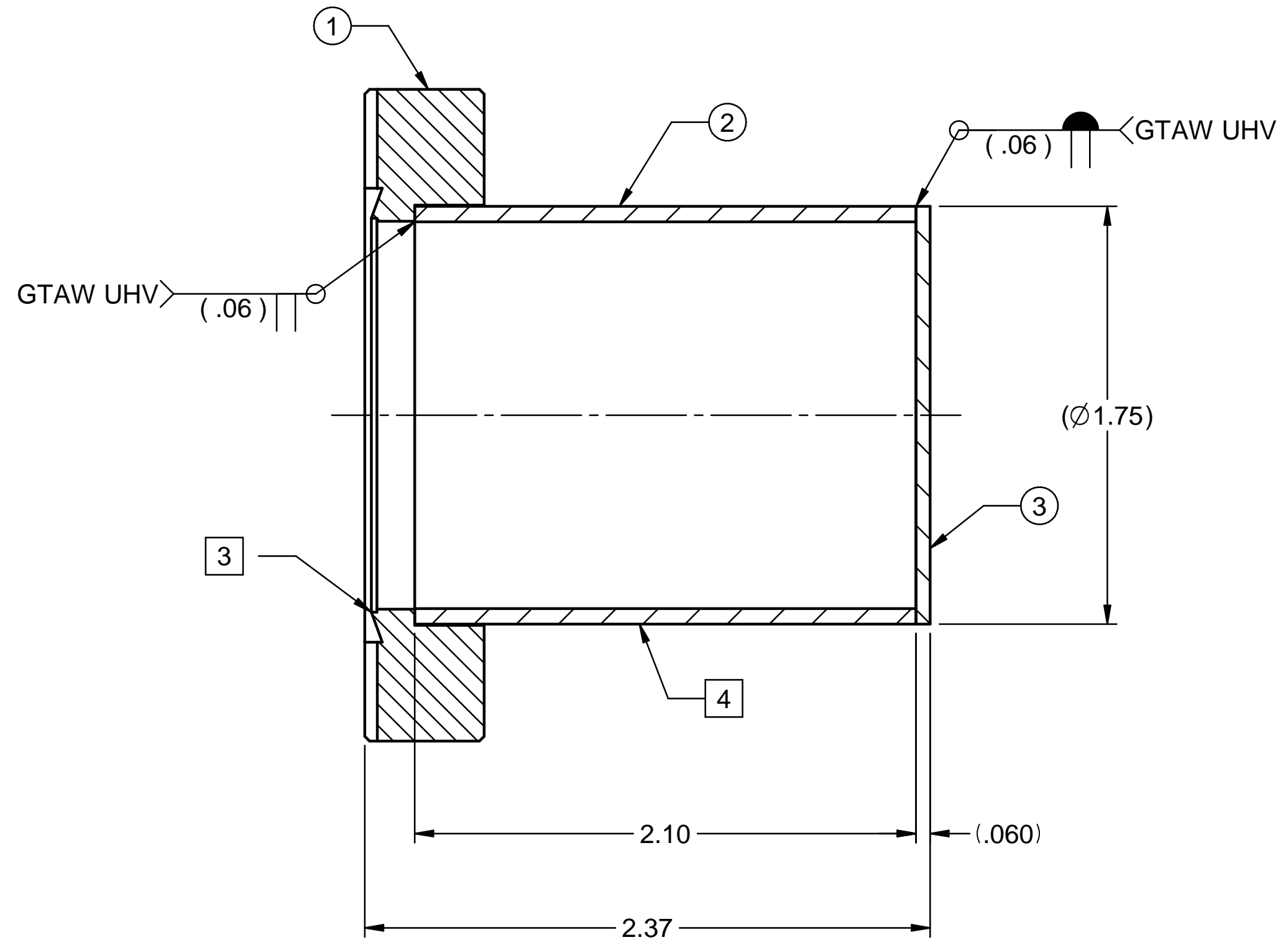
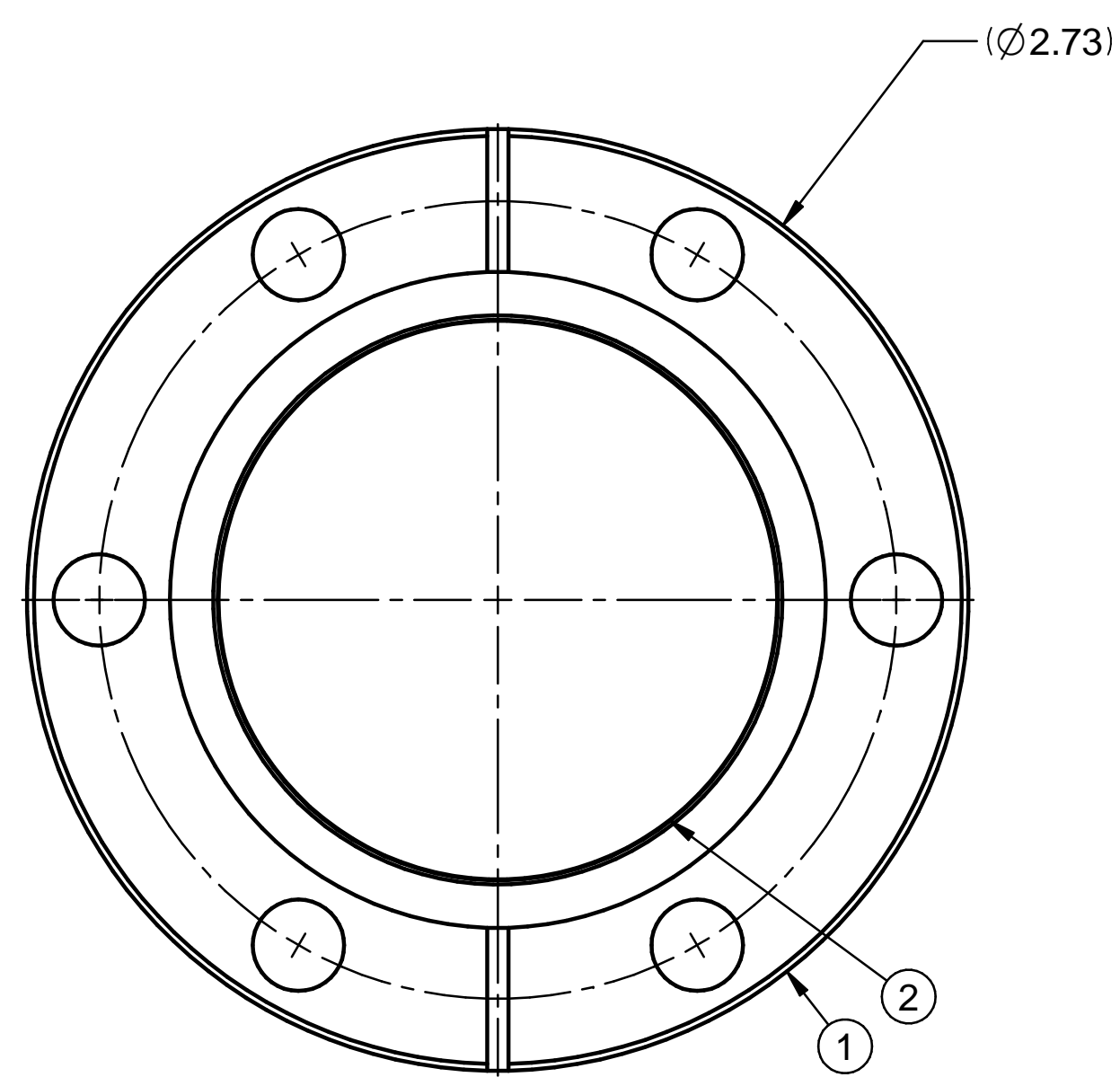


REV	DESCRIPTION	DWN	CHKR	APVD	DATE
-----	-------------	-----	------	------	------



NOTES: UNLESS OTHERWISE SPECIFIED

- 1 MATERIAL: SST PLATE OR SHEET, IN ACCORDANCE WITH ASTM A240. MILL SOURCE CERTIFICATES REQUIRED, INCLUDING HEAT NUMBER AND CHEMICAL ANALYSIS.
- 2 MATERIAL: SST 304 SEAMLESS TUBING, IN ACCORDANCE WITH ASTM A269. MILL SOURCE CERTIFICATES REQUIRED, INCLUDING HEAT NUMBER AND CHEMICAL ANALYSIS.
- 3 KNIFE EDGE MUST BE PROTECTED AT ALL TIMES DURING HANDLING AND MACHINING, AND SHALL BE FREE OF NICKS, SCRATCHES, AND BURRS.
- 4 STENCIL PART NUMBER AND REVISION IN .25 CHARACTERS APPROX WHERE SHOWN IN A COLOR CONTRASTING TO SURFACE.

ESTIMATED MASS
.690 lbm

ITEM	STOCK OR PART NO	TITLE OR DESCRIPTION	QTY
3		SHEET, .0595 (16 GA) THK, 304 SST	1
2		TUBE 1.75 OD .065 WALL, SMLS 304 SST	1
1	MDC 110052	FLANGE, 2.75 OD CF, 1.75 OD TUBE, NONROT, CLRN HOLES, 304 SST	1

ULTRA HIGH VAC PART
FABRICATE PER
FP-202-631-14

---	DIMENSIONING AND TOLERANCING IS IAW ASME Y14.5M-1994 AND Y14.41-2003	SCALE: 2:1 DO NOT SCALE DRAWING	CAD FILE NAME: sa25860287-0.dft
---	UNLESS OTHERWISE SPECIFIED DIMENSIONS ARE IN INCHES.	SLAC NATIONAL ACCELERATOR LABORATORY	U.S. DEPARTMENT OF ENERGY
---	TOLERANCES: BREAK EDGES .005-.015	THE DRAWINGS, SPECIFICATIONS AND OTHER DATA HEREIN PROVIDED SHALL NOT BE COPIED, PUBLISHED OR OTHERWISE FURTHER DISSEMINATED WITHOUT PRIOR WRITTEN PERMISSION OF STANFORD UNIVERSITY/SLAC	
---	INTERNAL CORNERS R.015 MAX	ENGR <u>D. WALZ</u> DATE	APPROVALS D. WALZ C. IVERSON
---	FRACTIONS ± ---	DWN <u>G. BOUCHARD</u> 12-5-2012	---
---	DEC .XX± .01	CHKR <u>D. WALZ</u>	---
---	.XXX± ---		
---	.XXXX± ---		
---	ANGLE ± ---		

FACET VACUUM SYSTEMS
OTR CUBE ASSY, 2.75 IN
CUBE END CAP ASSY, 2.75 IN

DRAWING NUMBER SA-258-602-87	REVISION NUMBER 0	C
--	-----------------------------	----------

SA-258-602-87
0
C
SH 1 OF 1