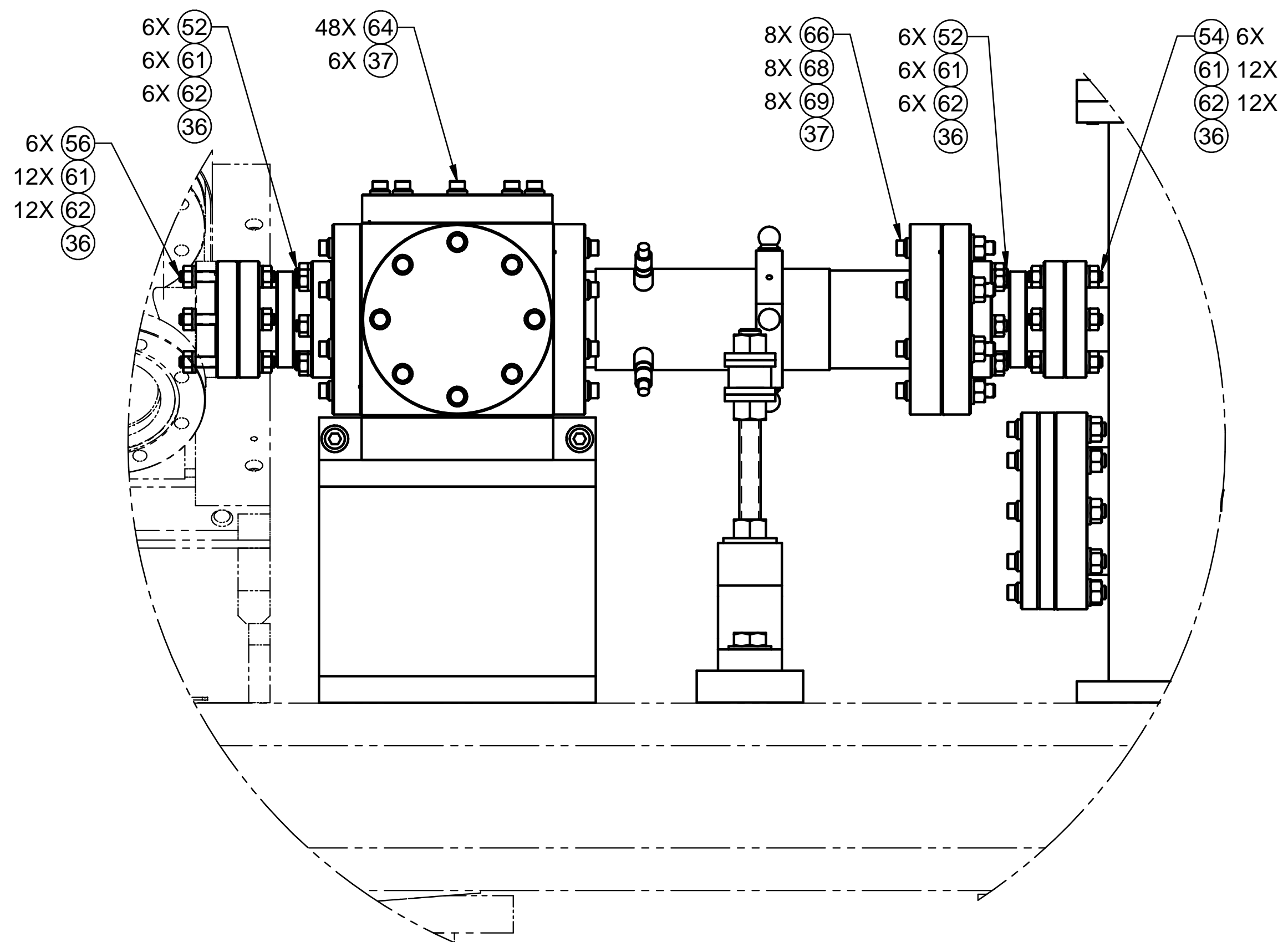


ULTRA HIGH VAC PART
FABRICATE PER FP-202-631-14



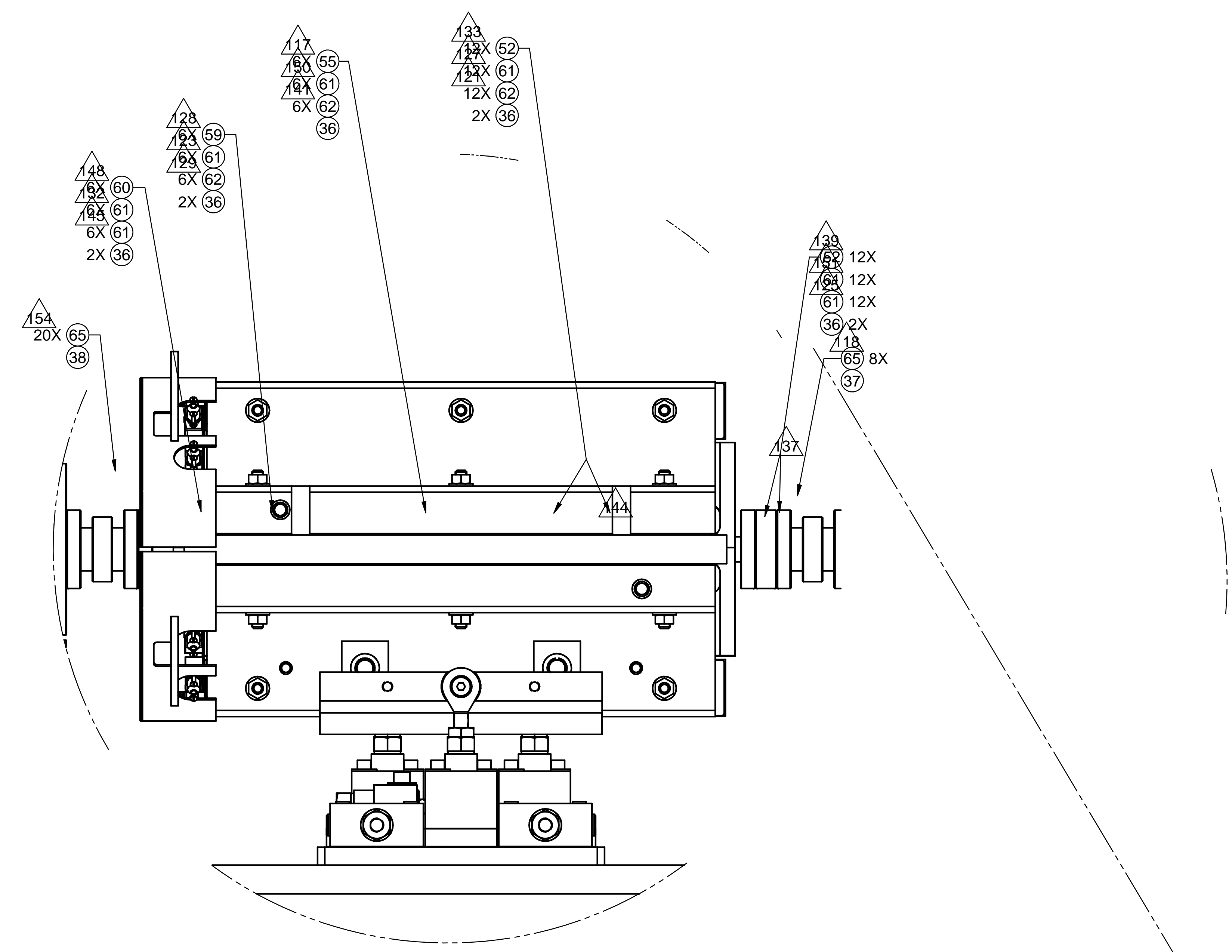
ITEM	STOCK OR PART NO	TITLE OR DESCRIPTION	QTY	ITEM	STOCK OR PART NO	TITLE OR DESCRIPTION	QTY	ITEM	STOCK OR PART NO	TITLE OR DESCRIPTION	QTY
62		NUT, HEX, 5/16-24 UNF-2B, STEEL	17	43	REF	WIRE MONITOR	2	25	MDC 450024	VIEWPORT 6" QUARTZ	2
61		NUT, HEX, .250-28 UNF-2B, SST 316	87	42*	McMASTER-CARR 92620A712	SCREW, CAP, HEX, 1/2-13 UNC-2A X 1.0, GRADE 8	4	24	MDC 408003	CUBE, 6 WAY, 4.50 CF FLANGE, SST	1
60*		WASHER, LOCK, HLCL SPR, .50, SST 316	4	41*	McMASTER-CARR 92620A626	SCREW, CAP, HEX, 3/8-16 UNC-2A X 1.25, GRADE 8	4	23	MDC 110018	FLANGE, 4.50 OD CF, BLANK, NON-ROTATABLE	4
59*		WASHER, LOCK, HLCL SPR, .38, SS 316	4	40*	UNISTRUT P1750	ANGLE FITTING	4	22	MDC 150008	FLANGE, REDUCER, 4.50 X 2.75 CF, 1.50 ID, ZERO LG, 304 SST	4
58*		WASHER, FLAT RGLR, .375 ID, SS 316	4	39	STANDARD BELLOWS 225-150-2-III	FLANGED BELLOWS ASSY, 2.75 CF, 3.07 NOM LENGTH, SST	8	21*	SA-258-410-65	TWINKIE SUPPORT ASSY	1
57		WASHER, FLAT NAR, .31 ID, SST 316	17	38	NOR-CAL 6C-400-CU	CUBE, 6-WAY CROSS, 6.0 CF, 304 SST	1	20*	SA-257-402-04	TWINKIE LASER INJ OTR	1
56		WASHER, FLAT NAR, .25 ID, SS 316	87	37	VARIAN FR04500275E	REDUCING FLANGE, 4.5 X 2.75, 304 ESR SST	1	19*	SA-258-410-44	VALVE SPRT, SERIES 010 DN40	1
55*		FLANGE BOLT 12 PT 5/16-24 X 2.25, SST, SIL PLD	1	36	VAT 54032-GE02	ALL METAL ANGLE VALVE, 1 1/2, MANUAL	1	18*	SA-258-603-97	Be WINDOW INSERTER VALVE	1
54		FLANGE BOLT 12 PT 5/16-24 X 2.00, SS, SIL PLD	16	35	VAT 48132-CE44	GATE VALVE, 40 MM BORE, PNEUMATIC ACTUATOR, ALL METAL	1	17*	SA-258-410-64	STAGE ASSY 0.91Q17.72	1
53		FLANGE BOLT 12 PT 5/16-24 X 1.25, SS, SIL PLD	57	34*	MDC 191017	GASKET, 8" OD FLANGE, OFHC COPPER	1	16*	SA-380-301-00	QUADRUPOLE ASSEMBLY	1
52		FLANGE BOLT 12 PT 5/16-24 X 1.00, SST, SIL PLD	48	33*	MDC 191013	GASKET, 6.00 OD FLANGE, OFHC COPPER	4	15*	SA-258-604-25	VAC CONN SPOOL, 21.50 L	1
51		FLANGE BOLT 12 PT 1/4-28 X 1.50, SST, SIL PLD	20	32*	MDC 191009	GASKET, 4 1/2" OD FLANGE, OFHC COPPER	9	14	SA-257-901-52	HYDROGEN PLASMA REGION	1
50*		FLANGE BOLT 12 PT 1/4-28 X .88, SST, SIL PLD	1	31*	MDC 191004	GASKET, 2 3/4 OD FLANGE, OFHC COPPER	18	13	SC-250-013-01	6" OD FLANGE, CF, NR BLANK, THRU HOLES, SST	1
49		FLANGE STUD, .250-28 X 2.25, 316 SST, SIL PLD	6	30*	MDC 150016	ZERO LENGTH REDUCER FLANGE, 6 CF X 2.75 CF X .78 THK, SST	1	12	SA-257-402-91	OTR CUBE ASSY, 2.75 IN EXP	1
48		FLANGE STUD, .250-28 X 1.75, 316 SST, SIL PLD	12	29	MDC 402018	NIPPLE REDUCER, 6.00 X 8.00 OD CF X 2.5 LG, 4.0 OD TUBE, SST	1	11	SA-257-402-56	MIRROR INSERTER, 3 INCH	1
47		FLANGE STUD, .250-28 X 1.25, 316 SST, SIL PLD	31	28	MDC 405002	CROSS, 2.75 CF X 1.50 TUBE	2	10	SA-258-410-06	PEDESTAL ASSEMBLY 6 IN	1
46	REF	KRAKEN CHAMBER	1	27	MDC 406002	5-WAY CROSS, 2.75 CF, 1.50 OD TUBE, 304 SST	1	9	SA-258-410-32	PEDESTAL ASSEMBLY 4.5 IN	1
45	REF	2.75 DBL SIDED Be FOIL FLANGE	1	26	MDC 450020	2.75 OD VIEWPORT, ZERO PROFILE QUARTZ	2	8	SA-380-746-20	BELLY BAND ASSY	1
44	REF	LASER DUMP FLANGE	1					7	SA-258-410-37	BPM SUPPORT, 2.00" ID	1

DIMENSIONING AND TOLERANCING IS IN ACCORDANCE WITH ASME Y14.5-2009 UNLESS OTHERWISE SPECIFIED, DIMENSIONS ARE IN INCHES. TOLERANCES: BREAK EDGES: 009-015 INTERNAL CORNERS R.015 MAX FRACTIONS 1/16 DEC .XXX .XXXX .XXXXX ANGLE 125 ALL SURF	SCALE: 1:10 ESTIMATED MASS: 4808.035 LB CAD FILE NAME: id25820014-0.dft	SLAC ENERGY NATIONAL ACCELERATOR LABORATORY U.S. DEPARTMENT OF ENERGY THE DRAWINGS, SPECIFICATIONS AND OTHER DATA HEREIN PROVIDED SHALL NOT BE COPIED, PUBLISHED OR OTHERWISE FURTHER DISSEMINATED WITHOUT PRIOR WRITTEN PERMISSION OF STANFORD UNIVERSITY/SLAC. ENGR. S. GREEN DWN. G. BOUCHARD CHKR. O. FRENER	FACET INTEGRATION SYSTEMS 20-6 EXPERIMENTAL AREA HYDROGEN PLASMA INSTL DRAWING NUMBER: ID-258-200-14 REVISION NUMBER: 0 DATE: 20150115
--	---	---	--

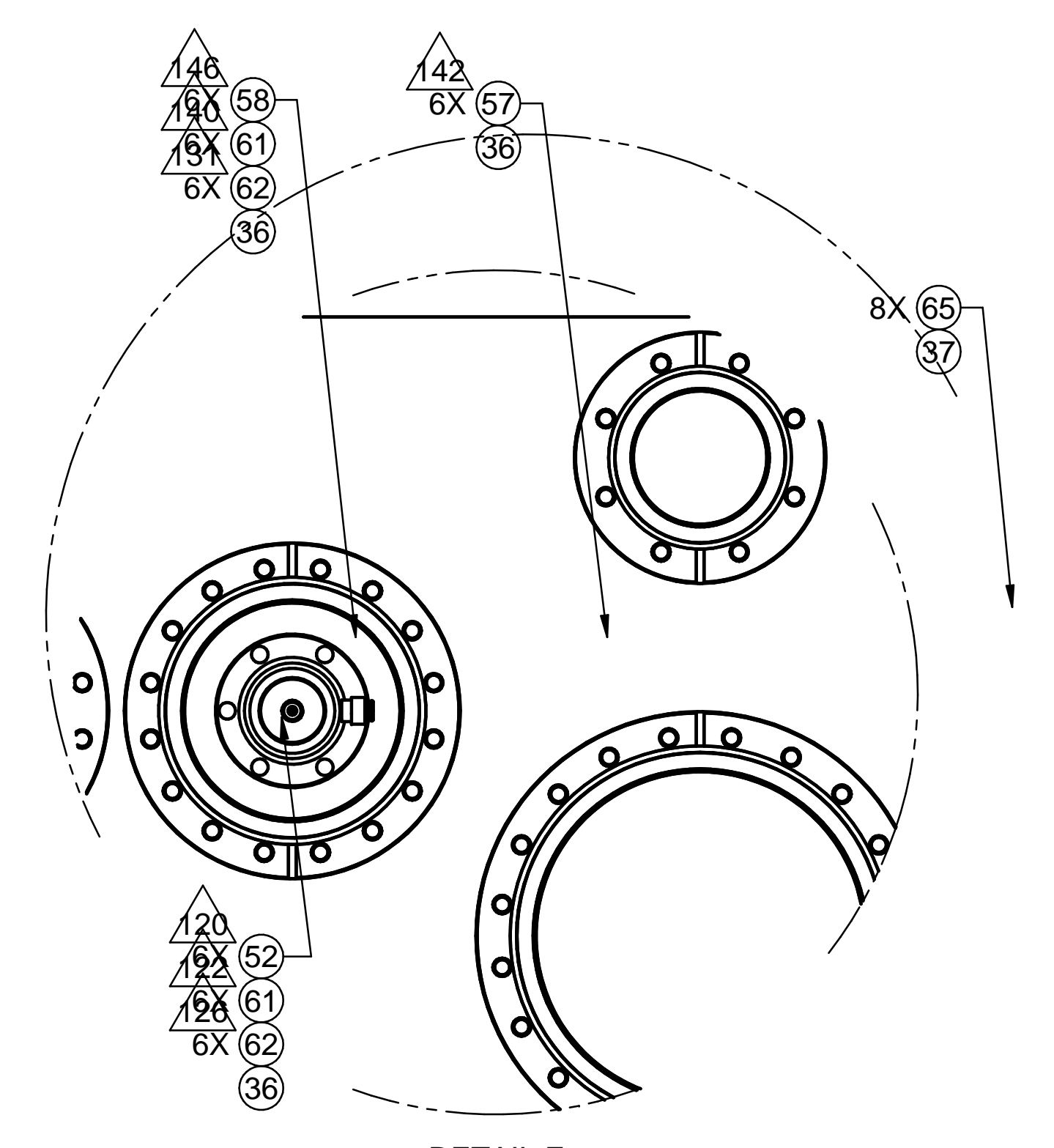
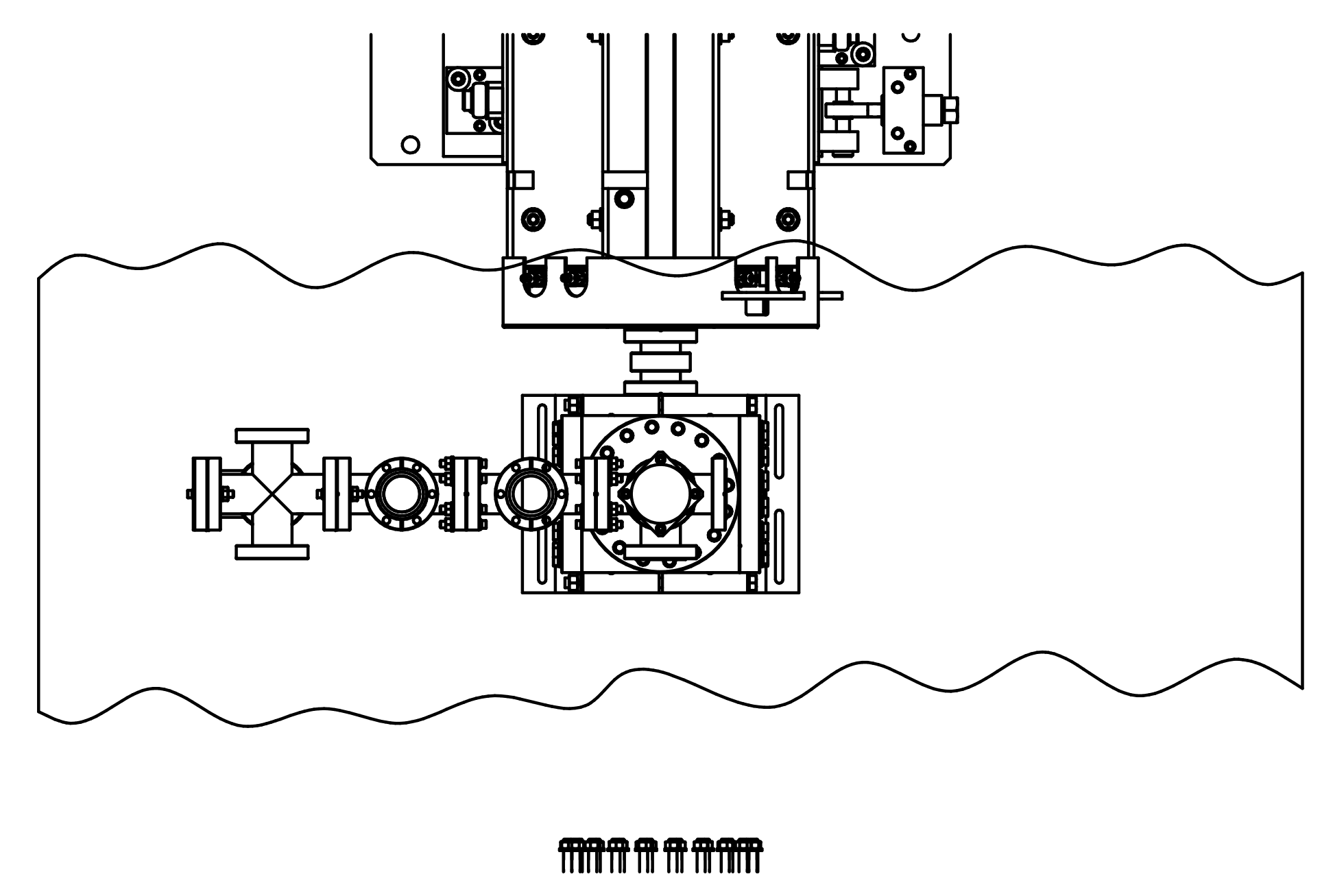
H
G
F
E
D
C
B
A

A (SEE SH 2)
A
B
C
D
E
F
G
H

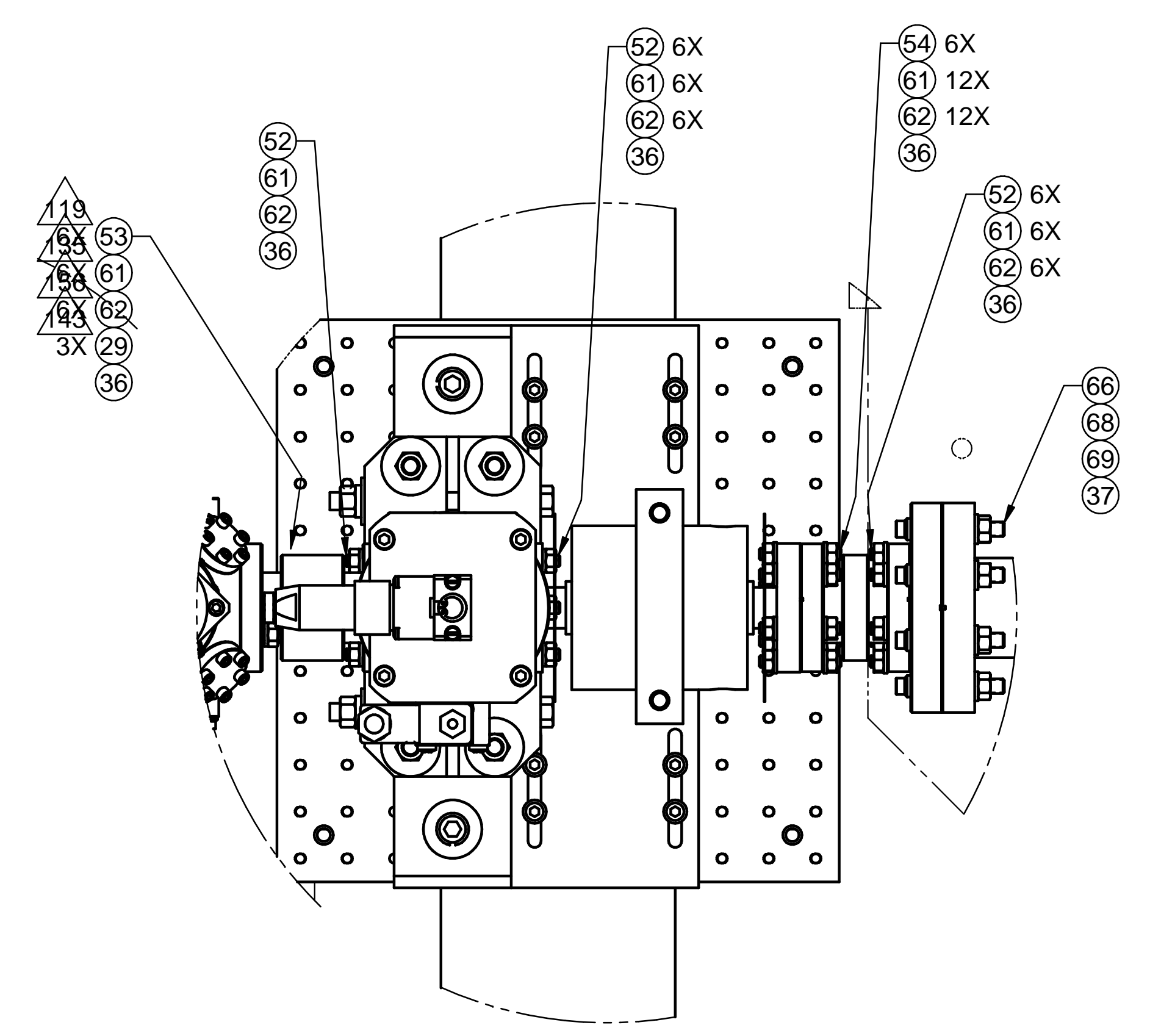
11
10
9
8
7
6
5
4
3
2
1
0
-1
-2
-3



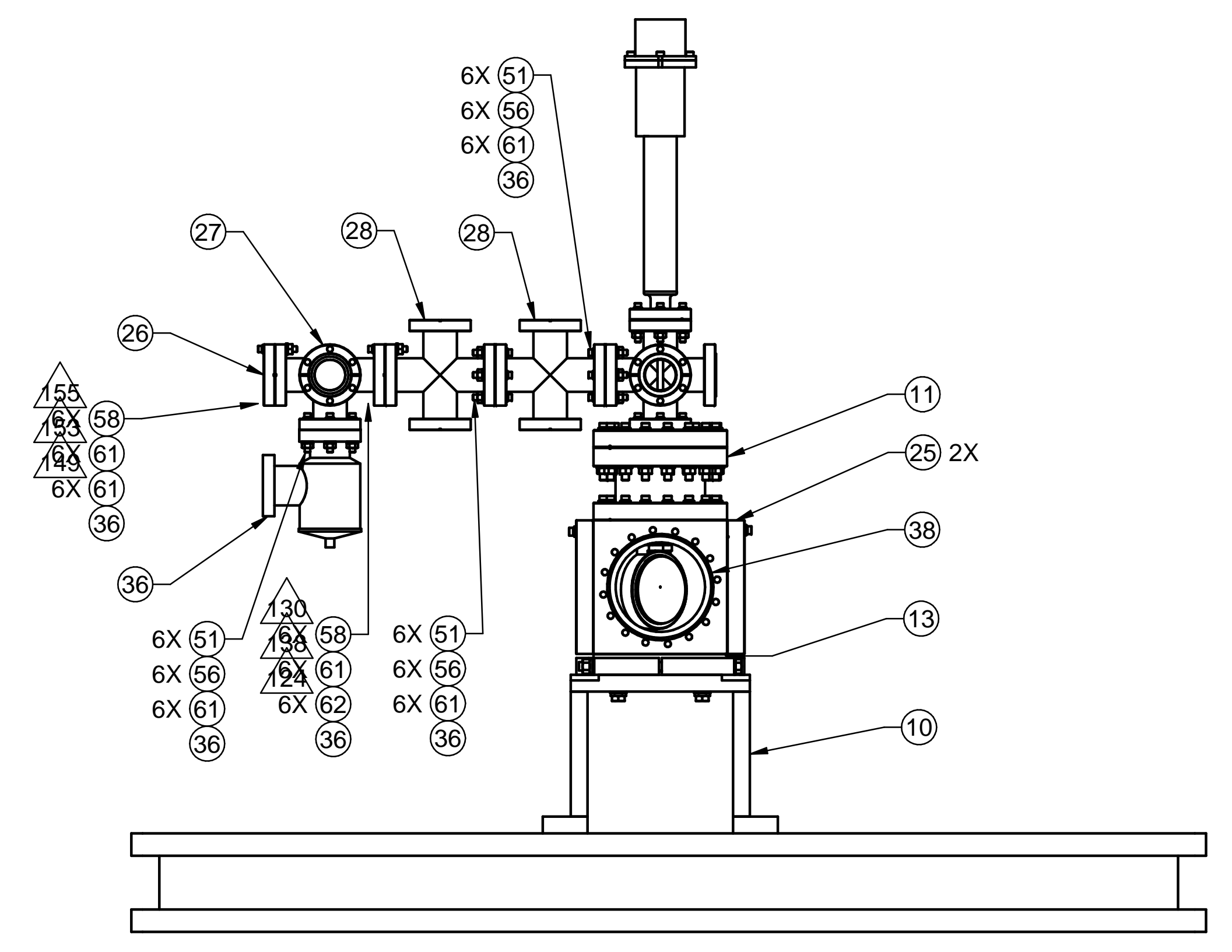
DETAIL E
SCALE 1:2.5
(FROM SH1)



DETAIL F
SCALE 1:2.5
(FROM SH 1)



DETAIL G
SCALE 1:2.5
(FROM SH 2)



VIEW H-H
SCALE 1:5
(FROM SH 1)

---	DIMENSIONING AND TOLERANCING IS IN ACCORDANCE WITH ASME Y14.5-2009	SCALE: 1:10 DO NOT SCALE DRAWING	ESTIMATED MASS: 4808.035 LB	CAD FILE NAME: id25820014-0.dft
---	UNLESS OTHERWISE SPECIFIED, DIMENSIONS ARE IN INCHES. TOLERANCES: BREAK EDGES: 0.005-0.015 INTERNAL CORNERS R.015 MAX FRACTIONS: 1/16		FACET INTEGRATION SYSTEMS 20-6 EXPERIMENTAL AREA HYDROGEN PLASMA INSTL	
---	ENGR. S. GREEN DWN. G. BOUCHARD CHKR. O. FRENER		DATE: 20150115 DESIGNED BY: S. GREEN CHECKED BY: C. IVERSON	DRAWING NUMBER: ID-258-200-14 REVISION NUMBER: 0
---	NEXT ASSEMBLIES:	ALL SURF. 125 ALL SURF.	FACET 20-6 HYDROGEN PLASMA	